

+27 64 73 18 235

@abalimi_bezekhaya

@abalimi.bezekhaya.ct

www.abalimi.org.za

THE PEOPLE'S GARDEN CENTRE
ISENTA YE GADI YABANTU
015-337 NPO | 930052374 PBO

Head office:
33 Mobile Road, Airport Industria, Cape Town
PO Box 44, Observatory, 7935
+27 21 371 1653 info@abalimi.org.za

ABALIMI GROWS FARMERS. FARMERS GROW VEGGIES.

PLANTING CROPS, NURTURING GROWTH, REAPING CONFIDENCE



Supervisor Nomntu in her Garden by the Vukuhambe Center

At the Vukuhambe Disabled Centre in South Africa, a special garden has taken root: the Masekhanye Garden is more than just a cultivated plot of land – it is a place of healing, growth, and empowerment for all who work in it.

The initiative was started by supervisor Nomntu, who works closely with children with physical disabilities. She wanted to offer more than activities – she aimed to provide meaning, teach skills like sewing, beadwork, and gardening, and offer a new perspective. After attending a workshop at Abalimi, she gained the knowledge to start the garden with the children.

What began as an simple idea of turning vacant land into a garden, has grown into

a vibrant space of connection, learning, and strength. Gardening provides fresh produce, improves food security, nurtures the body, relieves stress, and uplifts the spirit. The children, many facing daily challenges, benefit deeply from working in the garden: they gain confidence, mobility, and joy from caring for plants and watching them grow.

When vegetables are available, they are used to cook meals for the community through a small soup kitchen – the garden feeds far beyond its fences. She dreams of a market stall to sell their produce and spread the healing power of gardening: “If anyone is afraid to start their own garden – come to me. I’ll help you begin. No one should do it alone.”

FROM TRAGEDY TO TRIUMPH!

Originally from the Eastern Cape, Inga Mkoko built a life in Johannesburg as a landscaper, specializing in pavement and plant installation. But in July 2022, everything changed when he was caught in a mass shooting at a Soweto tavern. Inga was shot 13 times. Playing dead, he miraculously survived – but his injuries were life altering.

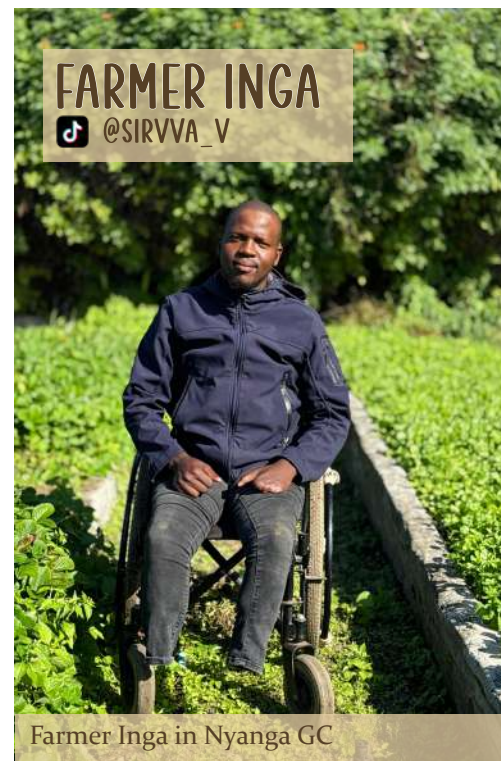
After six months in hospital, both of Inga’s legs were amputated below the knees, along with four fingers. Remarkably, he felt relief after the surgeries. “I wasn’t sad—I believed everything happens for a reason,” he says. Guided by deep faith, Inga chose healing over despair. “Life goes on,” he adds.

He returned to Cape Town to support his mother, who had fallen into depression. While receiving treatment in Nyanga, Inga came across Abalimi Bezekhaya’s garden – and something clicked. He felt a deep sense of peace.

Inspired, Inga created “The Survivor Garden” in his backyard – a living symbol of resilience and hope. With support from Mama Vatiswa and Amanda at Abalimi, he began rebuilding his life through urban farming.

Today, the garden is more than a food source. It’s a space where Inga sells seedlings, teaches gardening, and gives out free seeds. He shares his journey on TikTok, inspiring thousands with his courage and optimism.

Looking ahead, Inga dreams of expanding the garden into a community hub – creating jobs and eventually a rehab centre for trauma survivors.



Farmer Inga in Nyanga GC

“When you’re using a wheelchair, it’s not over. Life isn’t hard – it just has challenges that make us strong.

Accept what you can’t change, and change what you can’t accept.”

- Inga Mkoko

OUR ROOTS AND REACH

Dear Friends,

We’ve been busy in the gardens, but we wanted to take a moment to reach out and reconnect.

Here’s a quick reminder of what Abalimi Bezekhaya is all about. Our name means “farmers of the home” in isiXhosa, and since 1982, we’ve been working with communities across the Cape Flats to grow healthy food and brighter futures.

Through training in organic farming, we equip people with the skills and tools to establish home and community gardens. These gardens not only improve household food security but also create opportunities for income generation. It’s all about cultivating sustainable, grassroots change—right from the soil up.

Thank you for being part of our journey. Your continued support helps us keep growing. Warm regards,

The Abalimi Team



Abalimi Team preparing manure bags

Our Focus at Abalimi Bezekhaya:

- **Empower Communities** – Support disadvantaged communities in the Cape Flats through hands-on organic farming training and access to resources.
- **Promote Food Security** – Encourage home gardening to ensure families have access to fresh, healthy produce.
- **Grow Livelihoods** – Support community production gardens that enable participants to earn an income from their harvests.
- **Assist Local Growers** – Provide access to affordable seedlings and organic fertilizers via local vendors.
- **Partner with Schools & Clinics** – Help establish organic gardens that nourish both bodies and minds.
- **Focus where it’s needed most** – Work in urban informal settlements such as Nyanga, Khayelitsha, and Philippi, where unemployment is high and soil conditions are tough

OUR FIVE PILLARS OF DEVELOPMENT



Training and Extension Services



Affordable and Accessible Resources



Infrastructure Support



Market Access



Organisational and Social Support

SOWING KNOWLEDGE, GROWING FUTURES

At Abalimi, we believe real empowerment begins with knowledge. That’s why we’re committed to equipping individuals with the skills and confidence to grow their own food and manage gardens. By fostering self-sufficiency, improving nutrition, and creating income through urban farming, we spark a ripple effect—when one person learns to farm, the knowledge often spreads to families, neighbours, and friends, building resilience and economic growth across communities.

Our Star Trainers

We’re incredibly grateful to *Ma Liziwe* and *Ma Vatiswa*, who have led our training programmes with dedication and heart for over 20 years. Their passion and commitment have empowered countless individuals and helped shape thriving, resilient communities. We hope you’ll stay with us for many more seasons to come!

Basic Urban Farming Course

Our hands-on training teaches essential gardening skills and shows the benefits of home food gardens for nutrition, income, and well-being. Our courses are offered in English and isiXhosa and include notes, a light meal, a starter pack, and a certificate.

AgriPlanner Training

A four-day interactive simulation for experienced micro-farmers. AgriPlanner helps participants budget, plan, and maximise productivity. Ideal for those who’ve completed our basic training and want to grow into viable micro-enterprises.

Focus Farmer Workshops

To support ongoing growth, we host monthly workshops on topics like pest control, record keeping, seed saving, herbs, biodynamic farming, and nutrition. These short, focused sessions meet real-time community needs.



Successful workshop participants



Focus Farmer Workshop: Medicinal Plants for First Aid

Basic training costs R70 for unemployed residents; focus farmer workshops are free - Abalimi relies on ongoing fundraising to cover the funding gap.

BASIC COURSE

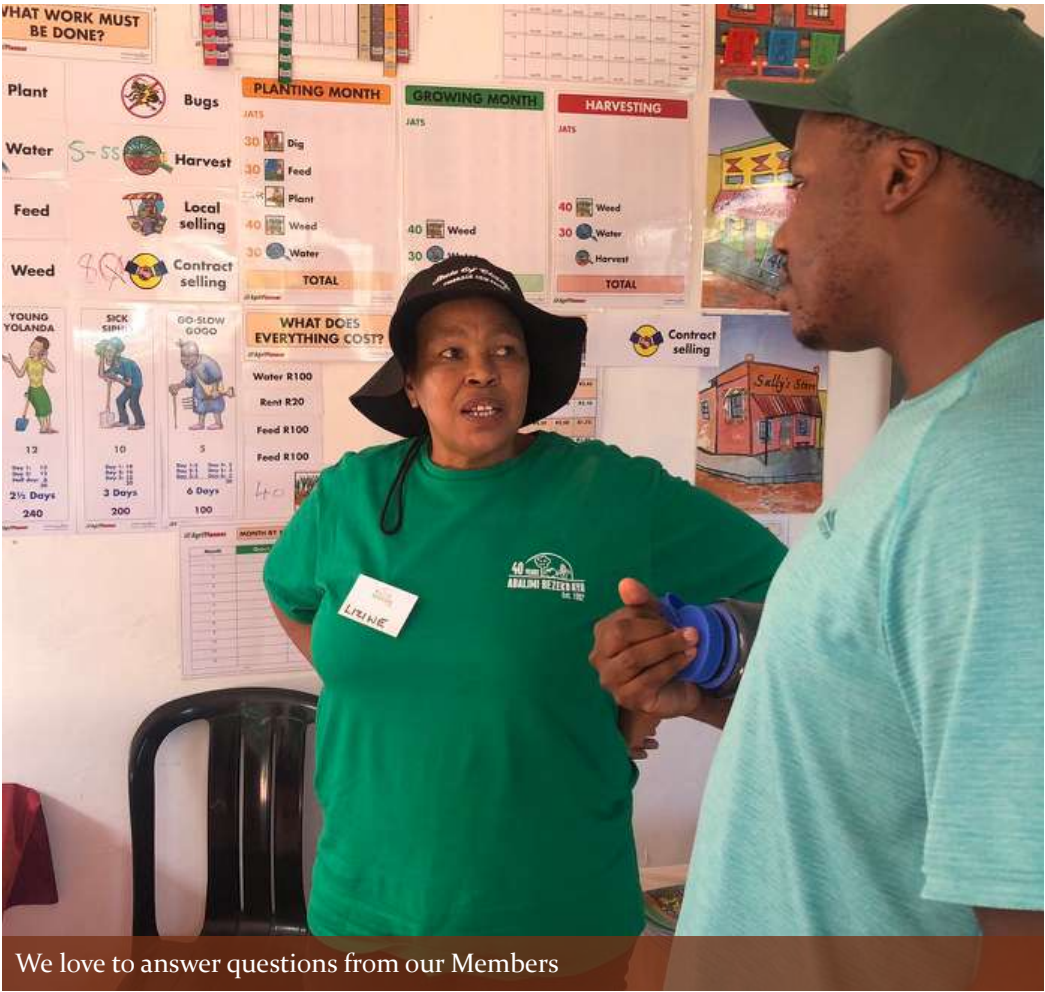
Our three-day Basic Urban Farming Course offers participants a strong foundation in sustainable, small-scale food production - tailored for urban settings and informal communities.

Day 1 kicks off with an introduction to Abalimi Bezekhaya and the principles of organic urban farming. Participants explore how to plan a productive garden, design with windbreaks, create a planting calendar, and understand the life and structure of healthy soil. We also cover which vegetables grow best in different environments.

Day 2 dives into practical techniques, including trench beds, sheet mulching, composting, manure tea, crop rotation, and container gardening. Participants apply what they learn directly in the garden, building real confidence and skills.

Day 3 focuses on refining those skills with hands-on activities like transplanting seedlings, sowing seeds, thinning, mulching, and harvesting. We also explore natural pest control, including homemade sprays and companion planting, and end the day with a discussion on the role of nutrition in garden health and human well-being.

This course is a springboard for deeper learning and a powerful first step towards economic opportunity.



We love to answer questions from our Members



Teams work together during AgriPlanner Workshops

FARMERS' JOURNEY AFTER TRAINING AND HOW WE ASSIST



ABALIMI OFFERS AFFORDABLE AND ACCESSIBLE TRAINING



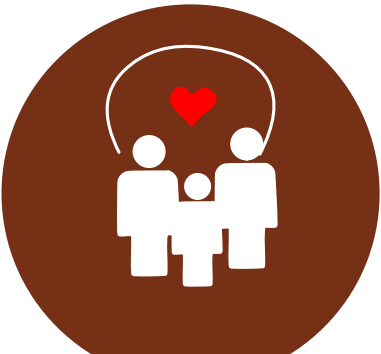
WE HELP PEOPLE TO START THEIR OWN GARDENS




VEGGIES SUPPORT FOOD SECURITY FOR HOUSEHOLDS



ABALIMI CONTINUES TO SUPPORT GARDENS OVER TIME



TRAINING FACT SHEET

Cources:	2020	2021	2022	2023	2024	AVERAGE PARTICIPANT PROFILE  36% Men 64% Women 20% Youth Trainees DOUBLED from pre-COVID to now
Basic training	14	39	27	29	26	
Focus Farmer	17	14	15	23	16	
AgriPlaner	-	2	2	1	1	
Attendees	426 people	908 people	813 people	972 people	814 people	

Moya’s story and where they are now:



02/12/2009

At this time, no one in the surroundings of Khayelitsha could have imagined that, in the future, there would be such a large and successful garden here.



30/10/2013

The first foundations of a new success story were laid and the first brave women started with the first garden beds.



30/03/2024

And now, these strong women and men have succeeded. The garden is standing and steadily growing. They now even have a new vision for their community.

FUTURE PLANS: Agrihub



Abalimi backbone and strongest force

Ma Christina Tenjiwe Kaba has been the soul of Abalimi for a long time, playing a pivotal role in shaping the organisation and guiding its mission for over three decades. Her dedication and leadership have left an impact on thousands of growers and gardeners across the Cape Flats.

Now, Ma Kaba focuses on her own garden in Moya we Khaya – a space where she finds deep peace and fulfillment. But even in this quieter chapter, her passion for community empowerment remains strong.

DREAMING TOGETHER – A VISION FOR THE FUTURE

Ma Kaba envisions a community agrihub and packshed - a shared space where local farmers unite to process, store, and sell their produce. As our network of growers

expands, so does the need for a central hub - one that not only supports their work but also welcomes visitors, celebrates community, and offers a space for farmers to meet.

Agrihub Plans Are Underway!

A joint venture between Moya, Abalimi, Uthando, and Harvest of Hope is driving this collaborative effort.

- Moya weKhaya has secured a lease on the land from the City and engaged with the community to build local support.

- Uthando is leading fundraising and has appointed The Natural Building Collective to design the agrihub, which will be built in the sustainable style of Ulwazi and Goal 50, using recycled tyres and rammed earth.

- Abalimi is managing project development, working closely with all partners to bring the vision to life.

- Harvest of Hope is providing input on farmers’ market access needs.

THE AGRIHUB SHOULD BE A PLACE ...



for aggregation of veggies



for farmers to connect



for showcasing township farming



Architects impression of the dream Agrihub and Packshed

To support this project, contact Uthando or donate through their website

HARVEST OF HOPE

@harvest_of_hope_farmers
www.abalimiharvestofhope.org.za

If you’re intrested to find out more about HOH OR DONATE to us then come and visit our Hompage



Farmers with some vegetables at the Agrihub

Growing Markets, Growing Futures

After a brief hiatus in 2019, Harvest of Hope is back as a farmer-led initiative that connects small-scale growers to larger, reliable markets. Re-established by the very farmers it supports, the programme provides a vital platform for local producers to earn income from their surplus crops while feeding communities with fresh, healthy vegetables.

Each Monday, farmers deliver their harvest to the new Agri-hub in Khayelitsha, where produce is checked for quality, sorted, and prepared for delivery to customers.

The process is coordinated by the farmers themselves, ensuring fairness, accountability, and shared responsibility. Regardless if a grower has a large production garden or a small home plot, everyone contributes, creating a dependable supply network.

More than just a market channel, Harvest of Hope builds a spirit of collaboration and shared success. We love working alongside these farmers and witnessing their continued growth and improvement over time.

FACT SHEET

Data from Feb 2024 - Mar 2025

% of sales paid to farmers	77,5%	Total value of sales	R 838 620
Number of farmers supplying HOH	71	Total paid to farmers	R 650 478
Favorite costumer	Shout out to Ladles of Love who buy veggies for their soup kitchens!		
		Weight of veggies sold	31, 8 tones

FROM CAPE TOWN TO THE EASTERN CAPE: GROWING ROOTS, GROWING IMPACT

For over 40 years, Abalimi has proudly supported micro-farmers in Cape Town's disadvantaged communities. Now, we're excited to share that our impact is reaching beyond the city - into the Eastern Cape, a place close to the hearts of many of the people we serve.

Why the Eastern Cape?

Many of our isiXhosa-speaking growers have strong family ties to the Eastern Cape. While they often migrate to Cape Town in search of work, they carry a deep desire to return home and apply their farming knowledge where it's needed most. Access to support services in rural Eastern Cape is limited, and these farmers saw a powerful opportunity to give back and grow something meaningful in their home communities.

What we have done

In June 2023, Abalimi management led a successful exploratory visit to the region, engaging with local communities and

assessing their needs with the support of former staff. This marked the beginning of an exciting new chapter. Since then, farmers have received essential tools and training, as well as ongoing support, enabling them to launch their own agricultural projects with confidence and purpose.

Our Vision

This expansion builds on our urban foundation, extending critical resources, infrastructure, and training to farmers in the Eastern Cape. With ongoing financial support, we aim to create sustainable livelihoods, strengthen local food systems, and promote equitable growth across the province. It's all about empowering micro-farmers - wherever they are - to thrive.

Do you want to follow our journey?

Let us know if you are interested in our work in the Eastern Cape and we will get back to you or follow us on Instagram!



Farmers in the Eastern Cape receiving tools

FACT SHEET

Data till March 2025

Farmers registered 80

Locations 4

Tools sent not enough

„Do your little bit of good where you are; it's those little bits of good put together that overwhelm the world.“

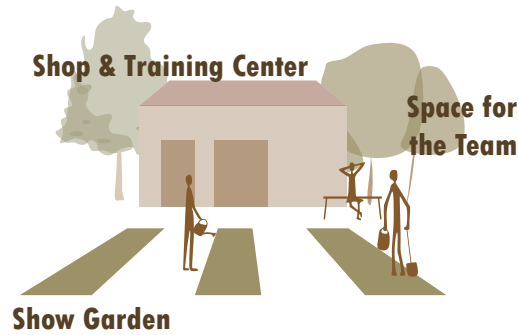
- Desmond Tutu

OUR GARDEN CENTRES: THE HEART OF ABALIMI'S WORK



Abalimi Bezekhaya's garden centres are the heart of our work—training hubs, supply points, and community anchors.

Here our members receive practical training, affordable tools, seeds and seedlings, and learn from real demonstration gardens. Thanks to donor support, resources are subsidised and accessible. The centres also serve as bases for our field team, who provide hands-on support across townships, each focusing on a key area to strengthen local food security and resilience.



Big thanks to all our amazing volunteers - near and far - and everyone who helps out! (and sorry if we missed anybody).

Asanda Mquma, Nocwaka Jim, Thunyelwa Mtyhotyhwa, Maliviwe Wogqoyi, Asenathi Ntsondwa, Sinovuyo Sobophya, Noxolo Mtini, Mamello Rakatana, Sizwe Tawe, Sinovuyo Muinukelwa, Zama Mnisi, Baraka Muslwa, Sisanda Duntsula, Emihle Liganiso, Kgotso Lethoba, Lilitha Kekana, Allen Radzilani, Amahle Mthembu, Ellen Bielfeldt, Maike Schäfer, Veronica Correa, Jonathan Muser, Marie Staatland, Jennifer Krichel, Khalil Steward, Milena Schwotzer, Hannah DeBold, Benjamin Hetz, Callie LaValle, Stephanie Donovan, Viktoria Hochmuth, Alexander Luchini, Ipyana Lugano Mwasambili, Fatematuj Rani, Karma Hashad, Saun Douch

And a shout-out to the board:

Morwesi Ramonyai, Macmillan Dzeha, Jeremy Jones, Rob Small, Grace Stead, Charles Bertrum, Ethel Phiri

Expanding to Meet the Need

As our reach grows, so do the challenges. With more and more people turning to us for support, we've found that many now travel long distances to attend training or purchase supplies. Unfortunately, transportation in Cape Town's townships is not always safe or easy, and for some, the journey is simply too far.

That's why we're thrilled to announce plans to open a new garden centre in Mfuleni - an area already home to several gardens we work with. This new centre will bring Abalimi's services closer to the people, reducing

travel time and helping us reach even more community members with the tools, training, and support they need to thrive. We are already working closely with the Mfuleni community to identify the right location, and the response has been overwhelmingly positive. This expansion is a direct response to community needs - and a testament to how much can be achieved when we grow together.

Thank you for making all of this possible. Your support continues to plant seeds of change in the lives of so many.



Abalimi and Harvest of Hope Teams at our recent Open Day

AND
WE NEED
YOU !!!

Every contribution, no matter how small, is vital in helping us build the new center and keep resources affordable for those in need. Your support makes it possible to continue offering these essential services at the low prices that our community relies on. We can provide Section 18a Tax certificates for financial or in-kind donations received.



SCAN ME

To see how much of your money actually helps each farmer, check out the donation website and form or contact us if you have any questions.

ACKNOWLEDGEMENTS

Editor, content and design: Viktoria Hochmuth, Grace Stead
Sub-editor and production support: Fatema Rani, Karma Hashad, Grace Stead, Field Team Abalimi, Rob Small

Photos: Abalimi Archives, Viktoria Hochmuth, Google earth, Uthando, Karma Hashad, Lizelle Lotter, Natural Building Collective

FRIENDS OF ABALIMI BEZEKHAYA

ROLL OF HONOUR

**EVERY LITTLE AND BIG
 BIT COUNTS – THANK YOU!**

If your name does not appear, or there is an error, please let us know? We will gladly make special mention in the next newsletter!

DIRECT DONATIONS

A Calmeyer
 Aachen Klimaticket
 Adriaan Carter Louw Trust
 AIIM-African Infrastructure
 Investment Managers (Pty) Ltd
 AM Winkelman
 Amy Wlodarski
 Andre Harms
 Andrea Rother
 Andrew Calmeyer
 Anonymous
 Audrey van den Honert
 Barry Jordan
 Beningfield
 Bill Rice
 Boudewina Meijer
 Bram & Thekla Buijs
 Brian Paul
 Bruce & Di Kerswill
 Burgan Cape Terminal (Pty) Ltd
 BV Jordan (Barry)
 C E Derham
 C Mackenzie
 C Owen
 C Palmer
 C Richardson
 Cabra Dominicans
 Cafe Frank
 Carola Meyer
 Caroline A. Petersen
 Caroline Frater
 Carter Family Charitable Trust
 CE Derham
 Ceferino Cenizo
 Cheryl Mackenzie
 Climbing for Change
 Clive & Anne Bruzas

Craig Howie
 Cynthia Derham
 Dandelion Trust
 Din Din Trust
 Douglas Jooste Trust
 Dr J Heckmann
 Dutch Senior Hockey Team
 Edgewise
 Estate Late Helen M Tempny
 Estelle Jakobsen
 Farm & Garden National Trust
 FE Graves
 FH Baumann / St Olas Trust
 Fiona Burton
 Florence Vanleuven
 Francoise & Robert Gibson
 Generosity 4 Humanity
 GlobalGiving
 Graham & Sally Bingham
 Graham M Howes
 GrandSlots
 GS Hodgetts
 Harald Winkler
 Harry Curtis
 Heidi Timm
 Helen Binckes
 Henrietta Patricia Chiappini
 Highveld Medical Services (Pty) Ltd
 Holly Arrowood
 Hyman Goldberg Foundation
 Ilana Rudolph
 Ineke Meijer
 Iona Stichting
 J Barrow
 J Heckmann
 Janet & Harald Winkler
 Jennifer De Tolly

Jill F A Freeth
 JM Heckmann
 Khayelitsha Swim Run
 Keith Hurworth
 Kelp Product (PTY) LTD
 Larry Jenkins
 Magda Alberts
 Margie Worthington-Smith
 Marian R Shinn
 Mike Hunter
 Monique Wilson
 Moonlighting Commercials (Pty)
 Neutrog
 Nicholas B Jerman
 Noakes Family Charitable Trust
 NR Tullie
 Patti Wickens
 Peter & Sheila Van Blerk
 Prime Trees
 Prof & Mrs J Greene
 Prof Andrea Rother
 R de Vos
 Rachel Perl
 Ranyaka
 RE Shaw
 RJW Graham
 Robert and Frankie Gibson
 Rock Dust Revive (Pty) Ltd
 Rolf Rhodes
 Rosemary Shaw
 S&B Lange
 SA Urban Food and Farming Trust
 Sally D Hofmeyr
 Scientific Services CC
 Selwyn Lange
 Shadowlands Wholesale Nursery
 Shelley Brown



@abalimi_bezekhaya



@abalimi.bezekhaya.ct



PO BOX 44, OBSERVATORY,
7935 / Tel (021) 371 1653
www.abalimi.org.za
www.harvestofhope.org.za
info@abalimi.org.za

FRIENDS OF ABALIMI BEZEKHAYA

ROLL OF HONOUR

**EVERY LITTLE AND BIG
BIT COUNTS – THANK YOU!**

If your name does not appear, or there is an error, please let us know? We will gladly make special mention in the next newsletter!

Silvertree Trust
Silwood Book Club
SLR Consulting
STD S.A
Sue Bellinger
Thaakira Samodien
The JDI Foundation Events Trust
Thomas King
Tony Pupkewitz
TSIBA
Tyne Andrew
Ursula Gregorowski
UTHANDO (Love) SA
VAC Logistics
VC Malherbe
WH Rice
Women on Farms Project

FARM & GARDEN TRUST

Anna Mouton
Anonyms
Beras Inter
Carol Garber
Craig Howie
Dr Anna Mouton
ER Tonnesen Trust
Erica Glyn-Jones
Estate Late P Krummeck
GBR Munro
Georgina Crawford
Gray Trust
Harold Winkler
Hazel Dawn Bond
John & Elsie Barrow Foundation

LE Jeune
Low and Co - ER Tonnesen Trust
Low and Co - Gray Trust
Low and Co - Mathers Trust
Mathers Trust
Nici Palmer
Peter & Sue Folb
R Cambell
R Cronwright
Rory Fife
RW Commin
RW Commin
Shelley Wigett-Beattie
Susan Folb
VO Thompson

ABALIMI BOARD MEMBERS

Morwesi Ramonyai (Chairperson)
Macmillan Dzeha (Treasurer)
Jeremy Jones
Ethel Phiri
Charles Bertrum
Grace Stead
Rob Small

PROJECT PARTNERS

African Bank
Beautiful Gate
City of Cape Town
Cooktastic
Dept Agrigulture
Fed Group
Foundation for Human Rights
Hollywood Bets

Mahmud Amhed Trust
National Development Agency
NOAH
SAOSA for PGS
South South North
SPCA
UCOOK
University St Thomas
VPUU

MAKE A DONATION

Payments can be made via EFT, BackaBuddy or SnapScan, while USA and UK donations can be made via GlobalGiving (see below).
Donations made to Farm & Garden National Trust (www.farmgardentrust.org) for Abalimi will still get a tax receipt and all donations to be paid 100% to Abalimi.

Follow us on social media!



@abalimi.bezekhaya.ct



@abalimi_bezekhaya



info@abalimi.org.za

**ABALIMI PROVIDES
TRAINING AND SUPPORT
FOR URBAN FARMING
IN THE TOWNSHIPS OF
CAPE TOWN**



**PO BOX 44, OBSERVATORY,
7935 / Tel (021) 371 1653
www.abalimi.org.za
info@abalimi.org.za**

JOIN AS A FRIEND

OR

DONATE TO ABALIMI

It costs R150 per month, or R1800 per year, for our team to support one micro-farmer with affordable inputs, training, follow-up and mentoring. (R150 / USD9 / Euro8 / GPP7 averaged as at October 2020)

I would like to BECOME A FRIEND of Abalimi. I understand that I have no obligations, but would like to promote Abalimi's work.

I would like to MAKE A DONATION in support of Abalimi's work.

I would like a SARS 18a TAX RECEIPT for my donation.

BECOME A FRIEND

Please send us your details via email to info@abalimi.org.za or fill in the form below if you would like to become a friend, receive our newsletter, donate or need a tax receipt.

MAKE A DONATION

Payments can be made via EFT, BackaBuddy or SnapScan, while USA and UK donations can be made via GlobalGiving (see below). Donations made to Farm & Garden National Trust (www.farmgardentrust.org) for Abalimi will still get a tax receipt and all donations to be paid 100% to Abalimi.

BANK DETAILS

Donations can be made via EFT into our Standard Bank account:
Account Name: ABALIMI BEZEKHAYA
Account Number: 070 912 637
Standard Bank, Thibault Square, Cape Town
Cape Town Branch Code: 020909 (or 051001)
Account Type: Business Current
SWIFT address: SBZA ZA JJ

ONLINE VIA BACKABUDDY

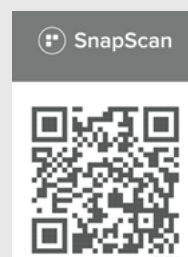
We have set up crowdfunding campaigns with Backabuddy for your ease where you can pay via credit/debit card or Paypal for local or international donors. Please visit www.backabuddy.co.za/charity/profile/abalimi-bezekhaya

ONLINE VIA GLOBALGIVING

USA and UK donations are tax deductible if donated via GlobalGiving, the leading international channel for web-based funding and networking. Visit their website at www.globalgiving.org where you can search for Abalimi (project #714 in USA and #56 in UK), or alternatively visit the Abalimi website for a direct link to GlobalGiving – www.abalimibezekhaya.org.za/donate/

SNAP SCAN

You can even pay via SnapScan if that is easier:



Please turn over

GET A TAX RECEIPT

Abalimi Bezekhaya is an approved Public Benefit Organisation so all donations and bequests in South Africa are fully tax deductible in terms of Sections 30 and 18A of the Income Tax Act. For USA and UK donations, please refer to GlobalGiving above.

If you are donating and would like a tax receipt for reduction of your SA annual income tax, simply drop us an email with your details (name and physical address) to info@abalimi.org.za or fill in the form below. We generally issue tax receipts in March each year, but happy to provide it earlier if required.

ACT NOW

Please fill in and return, or email us at info@abalimi.org.za with your details and requests.

I would like to be a friend of Abalimi, so please add me to your mailing list.

I would like to make a donation of _____ (amount) to Abalimi.

I will take out a stop order in favour of Abalimi to the amount of _____.

I will include Abalimi in my will ensuring that the good work continues into the future.

Please email acknowledgement. _____ Please do NOT name me as a donor.

Please send me a tax receipt. _____ I do NOT need a tax receipt.

Please send me an overview of the work that Abalimi does _____

My name:

Address:

Postal code:

Email:

Telephone:

Follow us on social media!

 [@abalimi.bezekhaya.ct](https://www.facebook.com/abalimi.bezekhaya.ct)

 [@abalimi_bezekhaya](https://www.instagram.com/abalimi_bezekhaya)

 info@abalimi.org.za